

## INTRODUCTION

The Precision Library Shelving System is the ideal shelving system for academic, corporate, public and legal libraries, as well as general office applications. Our library shelving system has been designed to adapt to both stationary and mobile storage applications. With an extensive range of accessories available, you can be sure to find the perfect solution for a wide variety of media formats and specific storage needs. Available in a wide range of heights, widths and depths, our library shelving system makes full and efficient use of available space.

## FEATURES

- An extensive range of accessories are available to solve a diverse array of library display and storage requirements
- The modular design of the system facilitates easy expansion and/or reconfiguration
- Clip-together construction makes installation and relocation quick and easy
- Steel construction for complete strength, stability and rigidity
- Powder coat finish for durability
- Shelf carrying capacity tested and rated to AS2273-1979 provides peace-of-mind
- End-panels define library sections and can be used to identify aisle contents
- Timber dress panels can be fitted for custom fitouts
- Slotted posts and wall-channel allow easy adjustment at 38.1mm increments
- Optional overhead braces can be fitted to provide anti-tip security

## TECHNICAL SPECIFICATIONS

<b>Systems</b>	Wall Mounted Freestanding - single/double Double-sided Mobile
----------------	--

<b>Bay Height</b>	1205 mm 1510 mm 1815 mm 1965 mm 2120 mm 2270 mm
-------------------	--

<b>Bay Width</b>	600 mm 900 mm
------------------	------------------

<b>Shelf Depth</b>	203 mm 254 mm 305 mm 381 mm
--------------------	--------------------------------------

<b>Canopy Depth</b>	286 mm (single) 337 mm (single) 572 mm (double) 674 mm (double)
---------------------	--

<b>Post Heights</b>	1205 mm 1510 mm 1815 mm 1965 mm 2120 mm 2270 mm
---------------------	--

<b>Wall Channel Length</b>	2438 mm
----------------------------	---------

<b>Standard Colour*</b>	White Satin
-------------------------	-------------

## SHELF LOADS

The range of shelves, inclusive of both 600mm and 900mm width and their respective available depths, have been tested and rated in accordance with AS2273-1979 at a load bearing capacity of 50kg. Where the load bearing capacity is required to exceed the rated 50kg, please refer your requirements to our technical department.

## BAY LOADS

Bay load ratings are dependant on size, layout and method of restraint.

### SINGLE SIDED BAY

Post Height (mm)	Max Bay Load* (kg)
1205	400
1510	400
1815	400
1965	400
2120	400
2270	400

\*The above figures assume bays are supported by a wall or supported with overhead braces. If supported by a wall it is also assumed that the bays are attached to the wall using appropriate fixings as described in the Installation Manual.

### DOUBLE SIDED BAY

Post Height (mm)	Max Bay Load (kg)	Out of Balance Load*(kg)
1205	600	400
1510	600	290
1815	600	200
1965	600	160
2120	600	150
2270	600	120

\*Out of balance bay load refers to the maximum variation in load per side of the bay. As an example, for a fully loaded 2270mm double sided bay, the loading per side should in the worst case be 360 and 240 respectively, so a total load of 600kg, with an 'out of balance' load of 120kg.

## OTHER

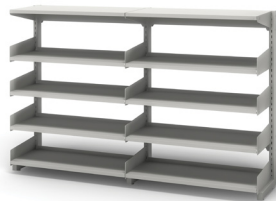
- Accessories**
- Canopy Shelves
  - Underslung Endplates
  - CD/DVD Shelf
  - CD/DVD Display Shelf
  - CD/DVD Display Rack - 2 Tier
  - CD/DVD Display Rack - 4 Tier
  - Zig Zag Shelf Display
  - Selecta Shelf
  - Magazine Shelf
  - Magazine Display Shelf - 2 Tier
  - Magazine Display Shelf - 3 Tier
  - Hanging Bag Rail
  - Pull Out Reference Shelf
  - Hinged Shelf
  - Browser Bin
  - Uptilt Endplates
  - Uptilt Shelves
  - Stayput Book Support
  - Bookshelf Indicator
  - Bookend
  - Slotted Shelf Endplates
  - Slotted Shelf Back
  - Slotted Shelf
  - Slotted Shelf Divider
  - Magazine Waterfall Shelf - 6 Tier
  - End Panels - Plain
  - End Panels - Display
  - End Panel Display Shelf

\*Please refer to the Dexion Office Colour Selector for a selection of available powder coat colours.

## SYSTEMS



Double-sided Mobile



Freestanding - Single



Freestanding - Double



Wall Mounted

## ENQUIRIES

For contact details, visit  
[www.dexionoffice.com.au](http://www.dexionoffice.com.au)  
 Or call 1300 180 358